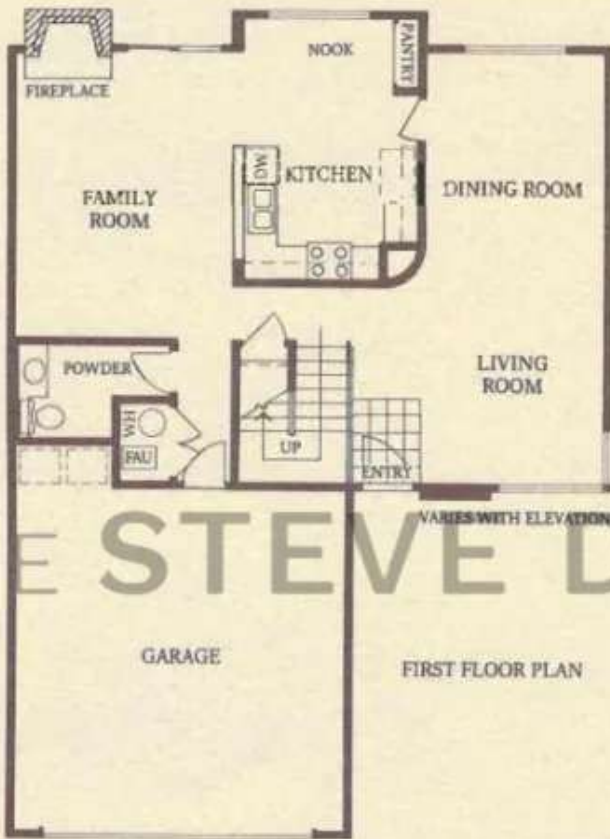


THE VILLAGE SERIES • THE PERALTA



3 bedrooms, 2-1/2 baths

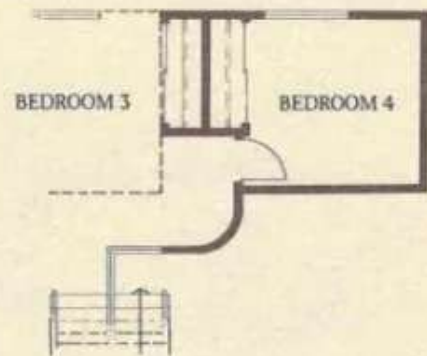
1,652 square feet*



THE STEVE DHILLON TEAM

THE PERALTA II

4 bedrooms, 2-1/2 baths
1,822 square feet*



Artist's conception of floorplan. All plans, features and specifications are subject to change without notice. The floorplan is for information purposes only and not intended to be a representation as to exact size. Window and door size and placement may vary with elevation. *Square footage stated is approximate.



Our Tradition... Personal Homes in a Changing World
PONDEROSA HOMES
One of the AETNA LIFE & CASUALTY Companies